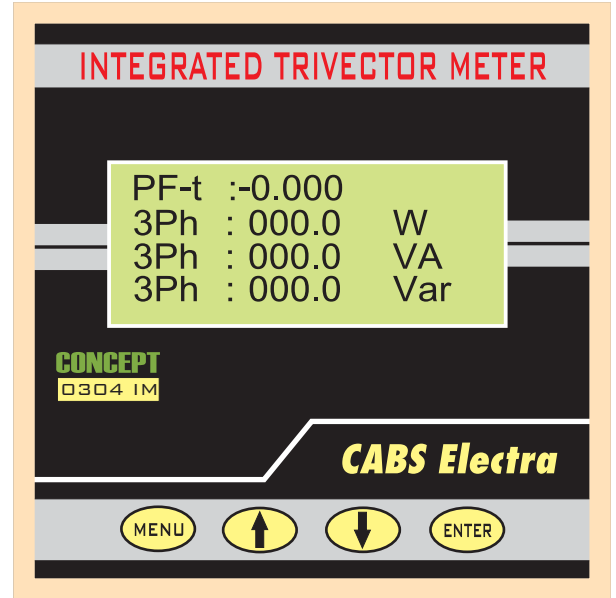




## 3 PHASE INTEGRATED TRI VECTOR METER

MODEL : **CONCEPT** 0304 IM / 0303 IM

- \* DSP & Microcontroller Based.
- \* 16 Character x 4 Line A/N Backlit LCD.
- \* Accuracy 0.5%, Autoranging.
- \* Displays three phase Parameters in a single window.
- \* 3-Ph 3-Wire & 3-ph 4-Wire Settings.
- \* Easy User interface with at site programming of CT & PT ratios.
- \* RS 232 PC connectivity(Optional).
- \* Displays 3 Phase Parameters: Volts, Amps, Active /Apparant/Reactive Power and Energy, Power Factor, Demand and Maximum demand, Frequency & Real time clock.



### SPECIFICATIONS:

PARAMETER	RANGE	RESOLUTION	ACCURACY*
VOLTS	20.00V – 999.99V 1.00KV – 999.99KV	0.01 V 0.01 KV	0.5% of F.S. +/- 10 Dgts
CURRENT	0.05A – 9999.99A	0.01 A	0.5% of F.S. +/- 10 Dgts
POWER FACTOR	0.200Lg-0.200Ld	0.001	+/-0.02 of Rdnng at FL.
ACTIVE POWER	0.00W – 999.9W 1.00KW – 999.99KW 1.00MW – 999.99MW	0.1 W 0.01 KW 0.01 MW	0.5% of F.S. +/- 10 Dgts
APPARANT POWER	0.00VA – 999.9VA 1.00KVA – 999.99KVA 1.00MVA – 999.99MVA	0.1 VA 0.01 KVA 0.01 MVA	0.5% of F.S. +/- 10 Dgts
REACTIVE POWER	0.00VAr – 999.9VAr 1.00KVAR – 999.99KVAR 1.00MVAR – 999.99MVAR	0.1 VAr 0.01 KVAR 0.01 MVAR	0.5% of F.S. +/- 10 Dgts
ENERGY	0 - 999999.99 KWh 0 - 999999.99 KVAh 0 - 999999.99 KQh	0.01 KWh 0.01 KVAh 0.01 KQh	0.5% of F.S. +/- 10 Dgts 0.5% of F.S. +/- 10 Dgts 0.5% of F.S. +/- 10 Dgts
FREQUENCY	45.00–65.00 Hz	0.01 Hz	0.01 +/- 0.02 of Rdnng
PHASE ANGLE	0— +/- 90 Deg	0.1 Deg	+/- 2 Deg

KVArh is denoted as KQh.

\* All accuracy as above is specified at 50Hz.

Auxiliary Control power: Either 230V,50Hz or 110V,50Hz  
(Any one as per order)

Dimensions: 96mm(height) x 96mm(width)x85mm(depth)
Cutouts : 92mm(height) x 92mm(width)
Weight : 400 gms (Approx)
Enclosure : ABS Plastic, polycarbonate faceplate overlay
Environmental: Operating Temperature: 10 ~ 70 Deg C. Relative Humidity: Max. 95% Non Cond.

### SCREEN SHOTS:

#### Voltage(L-N):

VOLTAGE [L-N]  
R : 000.00 V  
Y : 000.00 V  
B : 000.00 V

#### Voltage(L-L):

VOLTAGE [L-L]  
RY : 000.00 V  
YB : 000.00 V  
BR : 000.00 V

#### Current:

PHASE CURRENTS  
R : 000.00 A  
Y : 000.00 A  
B : 000.00 A

#### Power Factor:

POWER FACTOR  
R : -0.000  
Y : -0.000  
B : -0.000

#### Active Power:

ACTIVE POWER  
R : 000.0 W  
Y : 000.0 W  
B : 000.0 W

#### Apparant Power:

APPARANT POWER  
R : 000.0 VA  
Y : 000.0 VA  
B : 000.0 VA

#### Reactive Power:

REACTIVE POWER  
R : 000.0 VAr  
Y : 000.0 VAr  
B : 000.0 VAr

#### System PF & Power:

PF-t :-0.000  
3Ph : 000.0 W  
3Ph : 000.0 VA  
3Ph : 000.0 Var

#### Energy & Freq.:

000000.00 KWh  
000000.00 KVAh  
000000.00 KQh  
00.00 Hz

#### Dmd & Max. Dmd.:

Dmd : 000.0 W  
Dmd : 000.0 VA  
Max : 000.0 W  
Max : 000.0 VA

#### Phase Angle.:

PHASE ANGLE  
R : + 90.0 Deg  
Y : + 90.0 Deg  
B : + 90.0 Deg

#### RTC & ,CTR/PTR:

16/03/10 13:08  
Ctr : 500:5A  
Ptr : 110:110V

\*\*Specifications and features are subject to change without prior notice.

Authorised Distributor :

Made in India By: **CABS ELECTRA INDUSTRIES**

11, Ram Swarup Khettry Road, New Alipore, KOLKATA 700 053.

Tel: 033 2400 8684/2498 8543/ 98043 4545

Fax: 033 2400 8684.

www.cabselectra.com